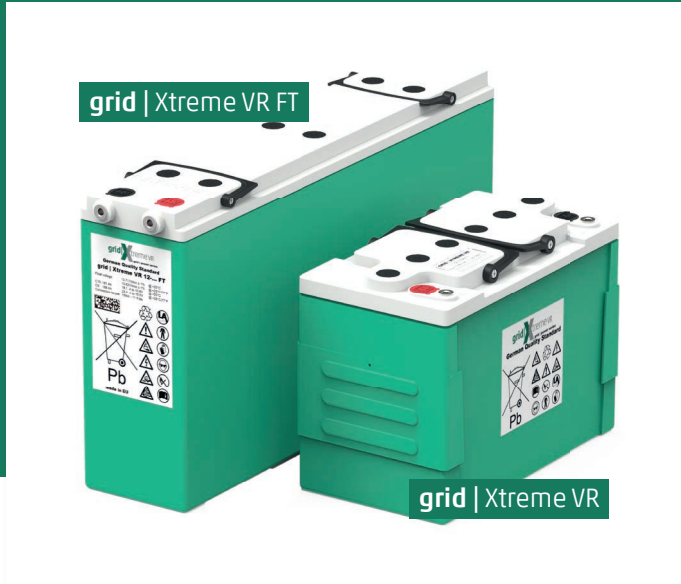


DATA SHEET



HOPPECKE grid | Xtreme VR
HOPPECKE

(99.99%) AGM

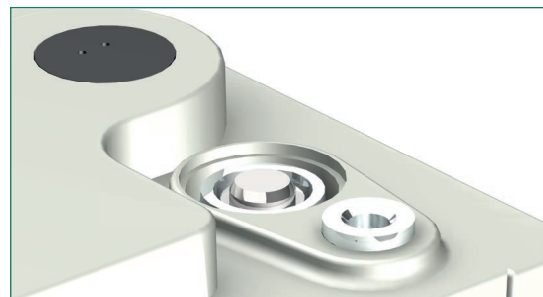
ESS = (TCO)

ESS(Enhanced Stability Standard)

가
가



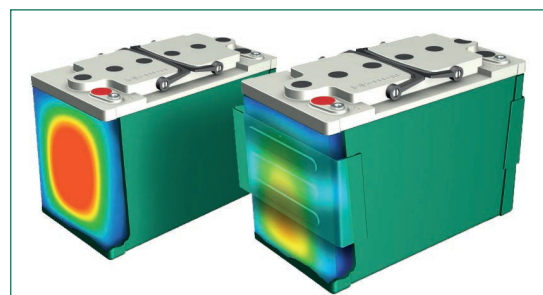
=



Safetyguard - tec =

Safeguard - tec()

가





- ESS
- HOPECKE
- 100%
- UL94 V-0 ABS
- 15



- XtremeStack
- FT: 가
- TT: Safetyguard - tec
- 2,285 Vpc @ 20°C (68°F) / 2,270 Vpc @ 25°C (77°F)
- 40°C to +55°C
- 2



- IEC 60896-21/22
- 가 가 Eurobat Guide (>12)
- 2015
- UL
- UL94 V-0 ABS ()
- ADR/RID, IMDG IATA
- ISO 9001, ISO 14001, ISO 50001 ISO 45001 HOPECKE

Type overview **grid** | Xtreme VR



Type	C ₁₀ /1,8 Vpc @20°C (68°F)	C ₈ /1,75 Vpc @25°C (77°F)	P _{15 min.} /1,6 Vpc @25°C (77°F)	P _{5 min.} /1,6 Vpc @25°C (77°F)	Length L*	Width W*	Height H	Weight	Terminal	Fig.
grid Xtreme VR 12-80	82 Ah	85 Ah	364 Wpc	668 Wpc	254 mm	174 mm	233 mm	~ 25,7 kg	M8 female	A
grid Xtreme VR 12-110	110 Ah	114 Ah	485 Wpc	891 Wpc	320 mm	174 mm	232 mm	~ 34,1 kg	M8 female	A
grid Xtreme VR 12-150	158 Ah	164 Ah	610 Wpc	1063 Wpc	359 mm	174 mm	283 mm	~ 46,6 kg	M8 female	A
grid Xtreme VR 12-170	178 Ah	185 Ah	690 Wpc	1269 Wpc	498 mm	174 mm	233 mm	~ 51,4 kg	M8 female	A

*) +3 mm length (L1) and +5 mm width (W1) using optional safeguard-tec



Type	C ₁₀ /1,8 Vpc @20°C (68°F)	C ₈ /1,75 Vpc @25°C (77°F)	C ₃ /1,7 Vpc @25°C (77°F)	C ₁ /1,7 Vpc @25°C (77°F)	Length L	Width W	Height H	Weight	Terminal	Fig.
grid Xtreme VR 12-100 FT	102 Ah	106 Ah	98 Ah	82 Ah	552 mm	125 mm	220 mm	~ 36,5 kg	M8 female	B
grid Xtreme VR 12-120 FT	124 Ah	130 Ah	119 Ah	100 Ah	552 mm	125 mm	220 mm	~ 38,8 kg	M8 female	B
grid Xtreme VR 12-150 FT	156 Ah	163 Ah	149 Ah	125 Ah	563 mm	110 mm	307 mm	~ 50,2 kg	M8 female	B
grid Xtreme VR 12-165 FT	165 Ah	172 Ah	163 Ah	133 Ah	551 mm	125 mm	305 mm	~ 54,9 kg	M8 female	B
grid Xtreme VR 12-180 FT	185 Ah	194 Ah	177 Ah	149 Ah	551 mm	125 mm	305 mm	~ 58,4 kg	M8 female	B
grid Xtreme VR 12-200 FT	199 Ah	208 Ah	189 Ah	159 Ah	563 mm	125 mm	322 mm	~ 61,2 kg	M8 female	B

Fig. A

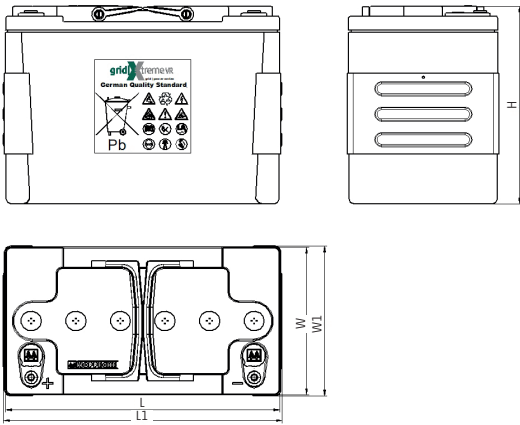
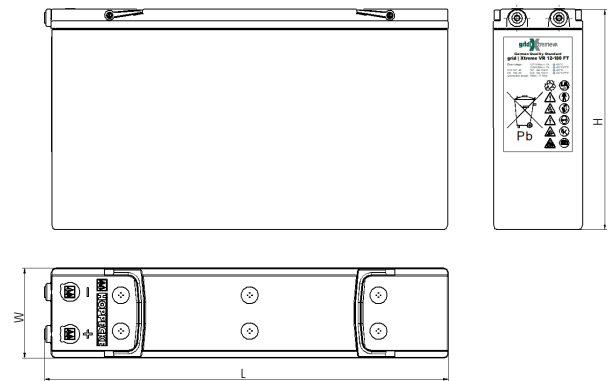


Fig. B



: 15 Nm - 133 lbf in

Applications **grid** | Xtreme VR

HOPPECKE **grid** | Xtreme VR



grid | Xtreme VR

DC AC

- HOPPECKE Operational Manual / Recommendations / Instructions
- International Standard IEC 62485-2 Safety requirements for secondary batteries and battery installations – Part 2: Stationary batteries
- Regional / National / Local Standards for the Environment

Optimal environmental compatibility - closed material cycle in certified recycling system

HOPPECKE Baterie Polska Sp. z o.o.
ul. Logistyczna 10
63-006 Śródka
Poland
Tel.: +48 61 64 65 000
Fax: +48 61 64 65 001
E-Mail: sbo@hoppecke.pl

HOPPECKE Batterien GmbH & Co. KG
Bontkirchener Straße 1
59929 Brilon
Germany
Tel.: +49 (0) 2963 61-374
Fax: +49 (0) 2963 61-270
E-Mail: reservpower@hoppecke.com

